



Light Fabric Transfers Use & Care Instructions

The design on the back of the Light Fabric Transfers is **PRINTED IN PINK/RED**

BEFORE YOU START, PLEASE READ

There are a few very important things you should keep in mind when using Light Fabric Transfers:

Fabric Choice

Light Fabric Transfers should only be used with white/light-colored 100% cotton or cotton/poly blend fabric.

Note: using colored fabric will result in the fabric color showing through the design. The best fabric color choices are white, off-white, and cream.

Timing

Make sure you pay close attention to your iron time. If you don't iron for the right amount of time, the transfer will not adhere properly. Also, **make sure you peel the backer while the transfer is still hot!** Peeling hot helps remove the backer in one clean motion.

Heat and Pressure

The proper heat setting and amount of pressure is important. If your iron is not hot enough or you don't apply enough pressure, the transfer will not adhere properly.

Inkjet Printers Only

For use with inkjet printers only. **Do not use with a laser printer as this will result in permanent damage to your printer.**

WATCH THE VIDEO

Visit pariscorp.com/templates or scan the QR code below to watch how-to videos for applying fabric transfers.



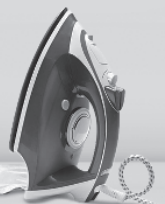
BROWSE THE FAQs

Visit pariscorp.com/faqs for assistance and tips for applying fabric transfers.

Still need help? Contact us through our support page.

GET INSPIRED

Follow us on social media @[printworksdirect](https://twitter.com/printworksdirect) or visit pariscorp.com/blog for ideas and templates.



For best results, read all instructions before proceeding

What you will need

- Inkjet printer
- New white/light-colored 100% cotton or cotton/poly blend fabric
- Pillowcase (to be placed between your fabric and the ironing surface)
- Household iron (for best results, check the bottom for a smooth, flat surface to ensure 100% coverage when ironing)
- Smooth, hard ironing surface such as a countertop or tabletop (**DO NOT use glass or an ironing board**)

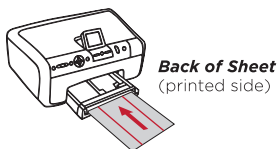
Designing your transfer

1. Be as creative as you like! Your design can include full-color photos, graphics and text.
2. Keep in mind that the transfer sheet background is translucent. **The fabric color WILL SHOW THROUGH ANY UNPRINTED OR WHITE AREAS in your design.**
3. Once you have finished your design, **flip/reverse the image horizontally so that it prints AS A MIRROR IMAGE.** This is especially important if your design contains any numbers or letters. *Note: you may be able to do this in your printer settings when you go to print. Refer to your printer manual for instructions.*

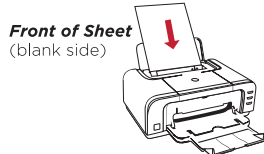
Printing your transfer (for use with INKJET printers only)

1. We recommend you test print your design on a plain piece of paper first to make sure it prints at the correct size and location on the sheet. *Note: In your print settings, select fast or draft mode to conserve ink.*
2. Once you are happy with your design, load one sheet of transfer paper into your printer. **Be sure to load the paper so that the design will print onto the blank matte side, NOT THE SHINY SIDE PRINTED IN PINK/RED. See illustrations.**

Front Loading Printers



Top Loading Printers



For use with inkjet printers only. DO NOT USE WITH A LASER PRINTER as this will result in permanent damage to your printer.

3. Print your design. *Note: In your print settings, select best/highest quality. Double check that your image is mirrored.*
4. **Allow at least 30 MINUTES FOR YOUR DESIGN TO DRY COMPLETELY before moving onto the next step.**

Preparing your fabric

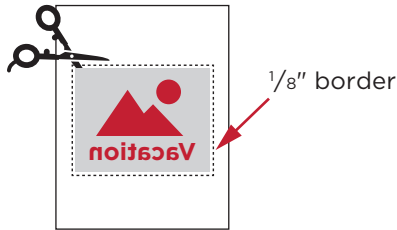
1. Heat your iron to the maximum/linen setting. **DO NOT use the steam setting.**
2. Place the pillowcase onto your ironing surface. **DO NOT use glass or an ironing board.** Iron out any wrinkles and smooth it over with your hands so that it is smooth and flat.
3. Lay your fabric on top of the pillowcase. Iron out any wrinkles and smooth it over with your hands so that the print area is smooth and flat. Allow fabric to cool. *Tip: Before applying your transfer, use a lint roller to remove any lint from fabric.*

Proper heat, firm pressure and ironing time are ALL required to get a successful transfer. The more pressure applied when ironing, the better your results. Ensure iron remains ON during the entire transfer process as some irons have an auto-off feature.

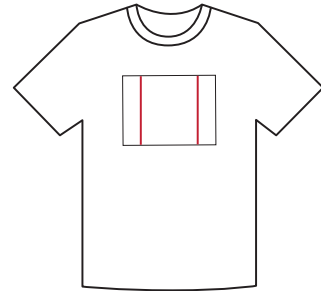
Applying your transfer - *adult supervision is always recommended*

NOTE: The Light Fabric Transfer process is different from the Dark Fabric Transfer process. Carefully read and follow ALL of the instructions below.

- 1 Cut out your design leaving a $\frac{1}{8}$ " border around your design.



- 2 Carefully place the transfer onto your fabric in the desired location, design side down.



- 3 Iron the backing paper with firm pressure, **using both hands** in a straight, non-stop motion: top-to-bottom then side-to-side. *Note: Be sure you cover the entire design, including the edges. Keep the iron moving to prevent scorching and yellowing.*



OPTIMAL IRONING TIMES:

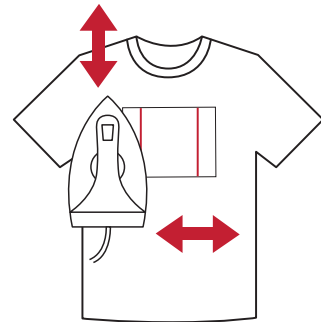
1 minute - designs that take up $\frac{1}{4}$ of the transfer sheet

1 1/2 minutes - designs that take up $\frac{1}{2}$ of the transfer sheet

2 minutes - designs that take up the full transfer sheet

If using an iron with a sole plate (the bottom) with recessed channels, extra ironing up to 1 additional minute may be needed.

Note: for Heat Press instructions see reverse side.

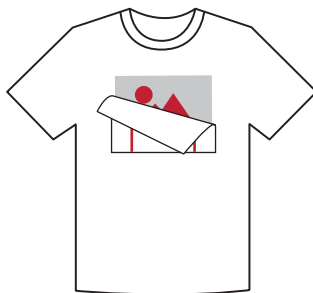


- 4 Wait 5 seconds, then peel the backing paper while still hot. Hold the fabric in place with one hand. Smoothly and evenly peel away with the other hand.

5 seconds



Peel while hot



- 5 Sit back and admire your beautiful creation.



Note: If for some reason the backing paper does not completely peel off, let the transfer cool completely. Then use a wet paper towel to dampen the remaining backing paper and lightly rub it off.

Heat/Hand Press Instructions

1. Preheat press to:
350-375°F (or 176-190°C) for 100% - 50% cotton blends.
250°F (or 121°C) for fabrics less than 50% cotton.
2. Press fabric for 3-5 seconds to release moisture and remove wrinkles.
3. Place printed transfer onto the fabric with the design side down.
4. Set to medium pressure for best results.
5. Press for about 20 seconds.
6. Wait 5 seconds, then peel the backing paper from the transfer using a smooth, even motion.

Tip: If using a portable hand press / smart press device, after steps 1 - 5, flip fabric over and press back side of design for an additional 20 seconds before proceeding to step 6. Remember to press down with firm pressure on both sides of the fabric.

Care and Handling

Washing

- Wait at least 24 hours before washing, wearing or using to allow the ink to completely dry.
- To prolong the vibrancy of the transfer, wash the fabric inside out in cold water.
- Do not use bleach when washing.
- Remove as soon as the wash cycle is complete.

Drying

- Turn fabric inside out, tumble dry on the lowest setting, or lay flat to dry with the transfer facing outwards.

Ironing

- If ironing fabric is desired, do not iron directly on the transfer.

JOIN THE PRINTWORKS CRAFT CLUB

Visit pariscorp.com/pwcraftclub and sign up to get the latest news and tutorials, gain access to special discounts and receive FREE product to create projects & share with the PrintWorks community.

It is FREE to join and you can unsubscribe at any time.



PrintWorks is a brand of Paris Corporation

© 2025, Paris Corporation | 800 Highland Drive | Westampton, NJ 08060 | pariscorp.com

01/25 #00398